

Visible Haematuria

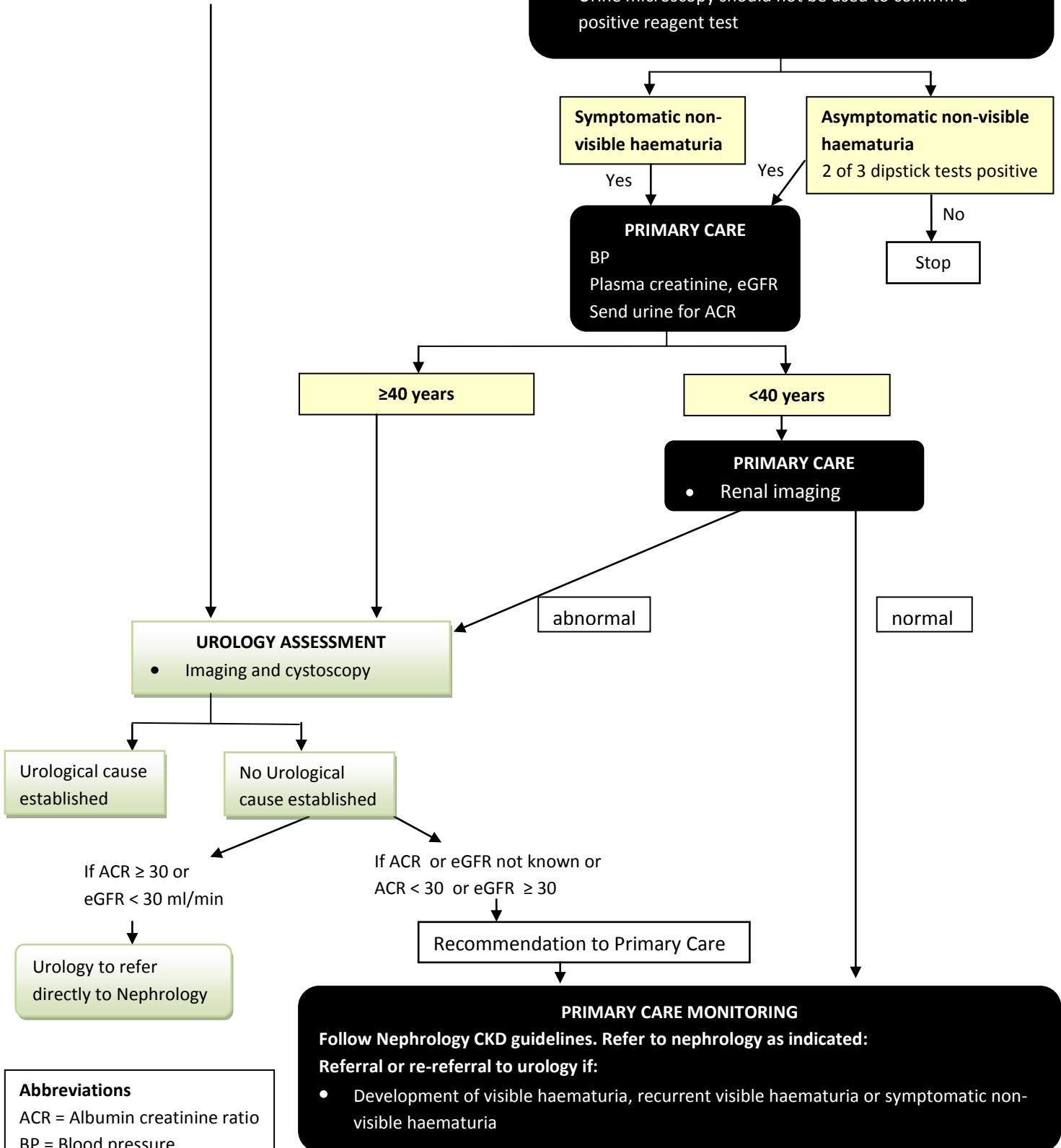
PRIMARY CARE

Plasma creatinine, eGFR
Exclude transient causes including urinary tract infection

Non-visible Haematuria

PRIMARY CARE

- Exclude transient causes including urinary tract infection
- Use dipsticks for the investigation of haematuria
- $\geq 1+$ blood requires further investigation
- Urine microscopy should not be used to confirm a positive reagent test



Abbreviations

ACR = Albumin creatinine ratio
BP = Blood pressure
eGFR = Estimated glomerular filtration rate