

Diabetes Footcare Pathway

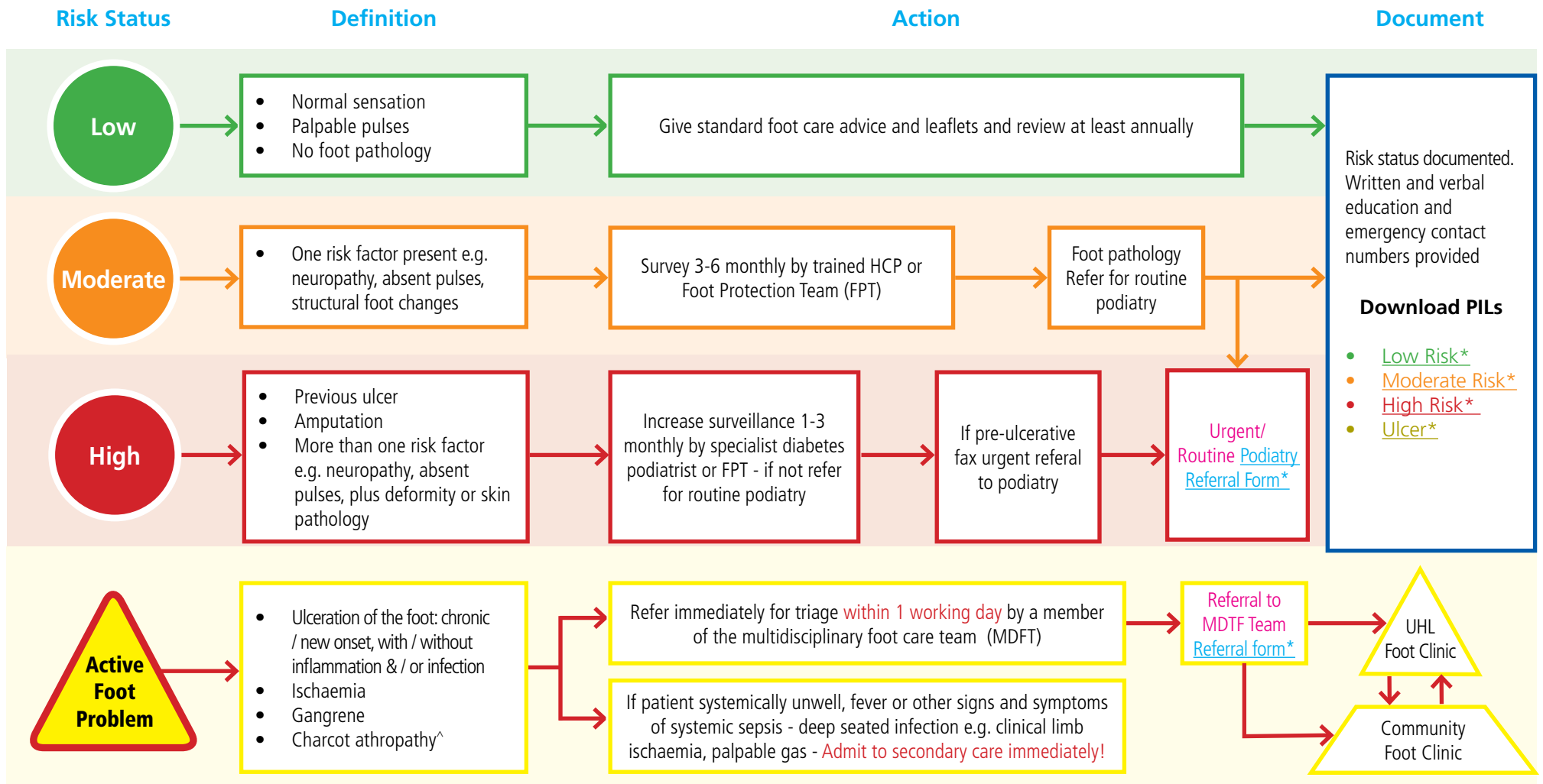


Annual Foot Review to be carried out by a suitably trained healthcare professional

Foot Examination with shoes and socks stockings removed

- Test foot sensations
- Palpate foot pulses
- Inspect for any deformity
- Inspect for foot pathology
- Inspect footwear appropriateness
- Signs & symptoms of neuropathic / ischaemic pain
- Check for signs of pre-ulceration
- Ask about previous ulceration
- Ability to self care

Diabetic Foot Risk Assessment



[^]unexplained hot, red, swollen foot with or without the presence of pain

*click on the links to download the referral forms and PILS or access via the Leicestershirediabetes website: www.leicestershirediabetes.org.uk

Diabetes Footcare Pathway V2

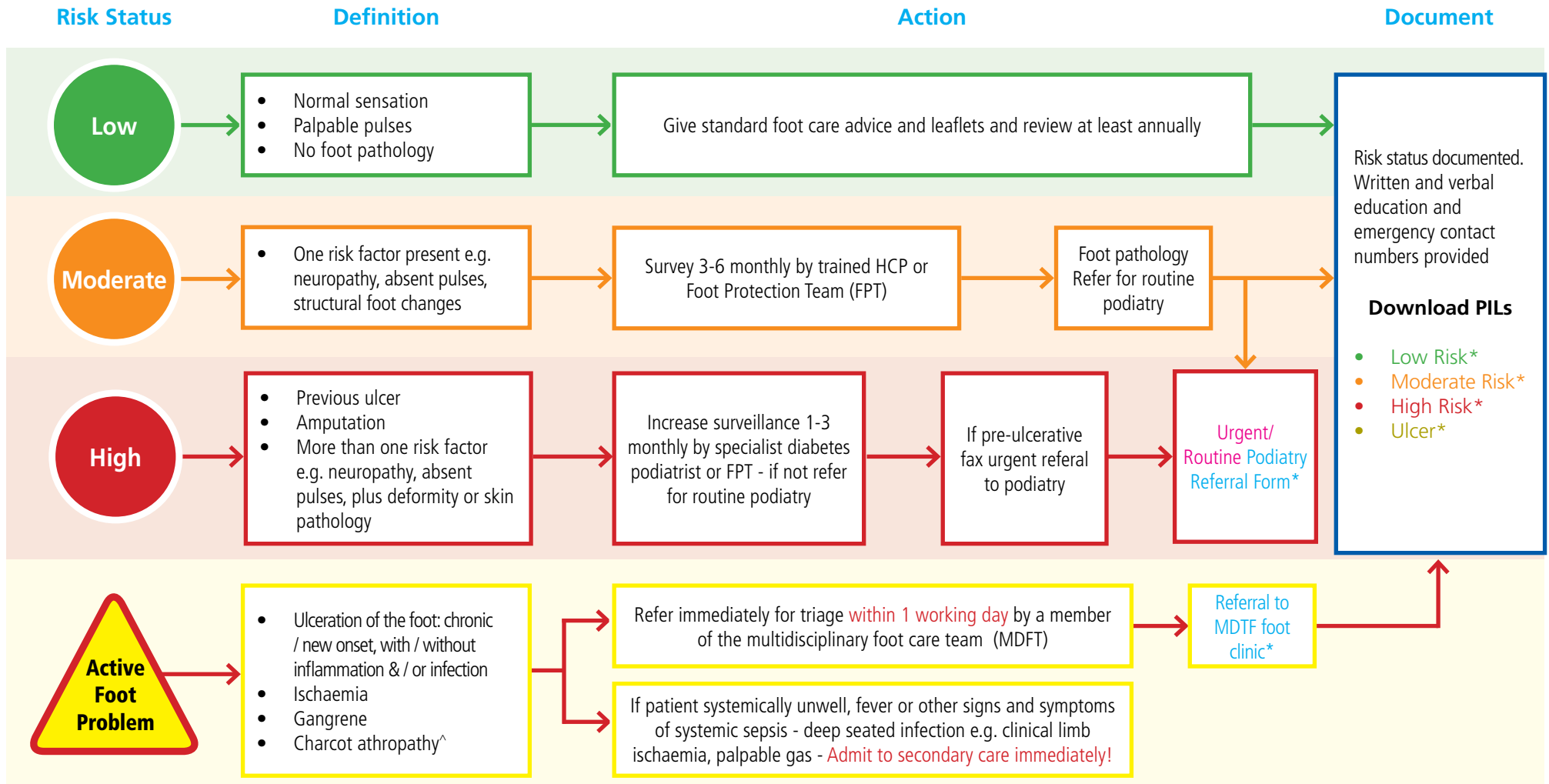


Annual Foot Review to be carried out by a suitably trained healthcare professional

Foot Examination with shoes and socks stockings removed

- Test foot sensations
- Palpate foot pulses
- Inspect for any deformity
- Inspect for foot pathology
- Inspect footwear appropriateness
- Signs & symptoms of neuropathic / ischaemic pain
- Check for signs of pre-ulceration
- Ask about previous ulceration
- Ability to self care

Diabetic Foot Risk Assessment



[^]unexplained hot, red, swollen foot with or without the presence of pain

*click on the blue links to download the referral forms and PILs or access via the Leicestershirediabetes website: www.leicestershirediabetes.org.uk

Diabetes Footcare Pathway old

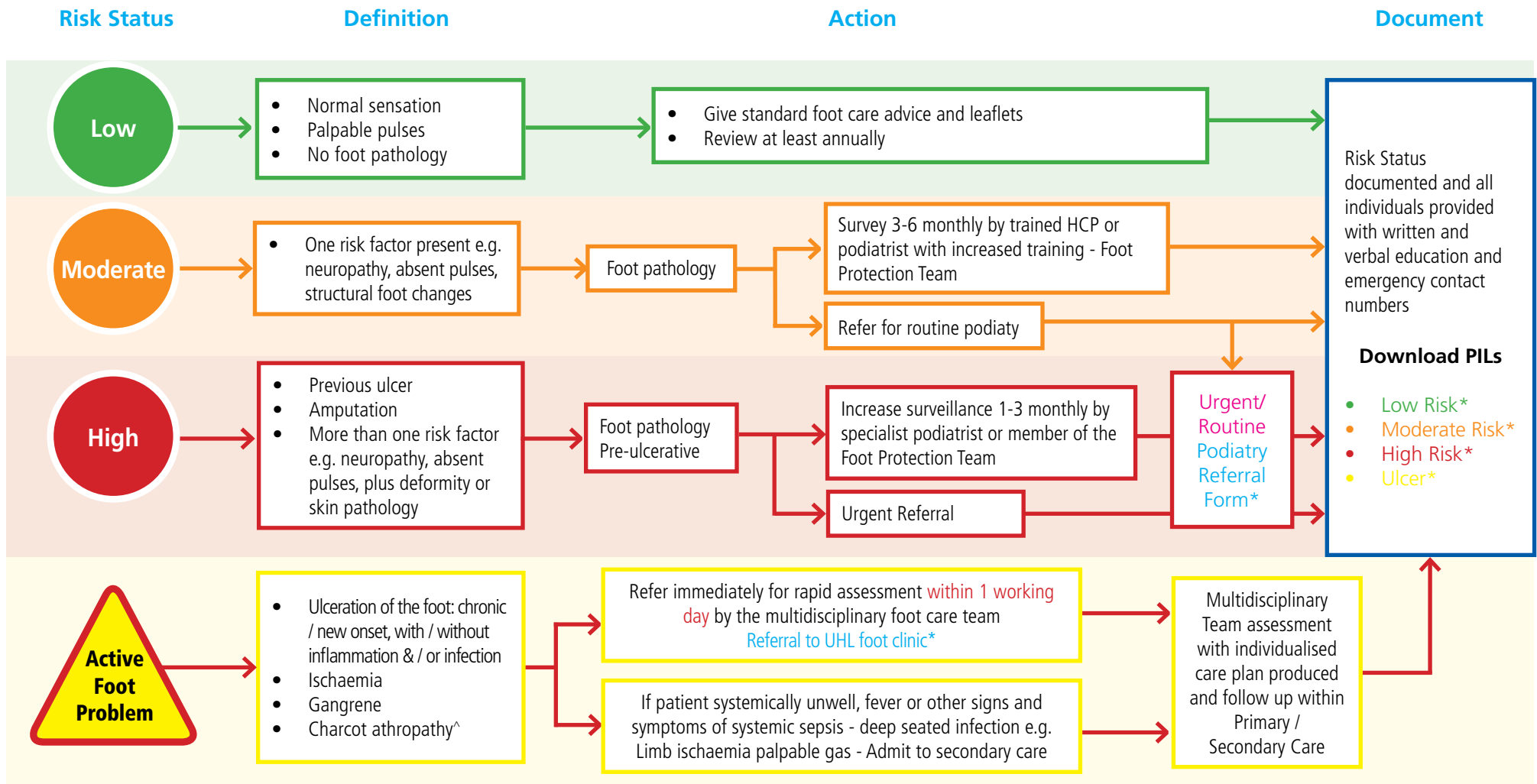


Annual Foot Review to be carried out by a suitably trained healthcare professional

Foot Examination with shoes and socks stockings removed

- Test foot sensations
- Palpate foot pulses Inspect for any deformity
- Inspect for foot pathology
- Inspect footwear appropriateness
- Signs & symptoms of neuropathic / ischaemic pain
- Check for signs of pre-ulceration
- Ask about previous ulceration
- Ability to self care

Diabetic Foot Risk Assessment



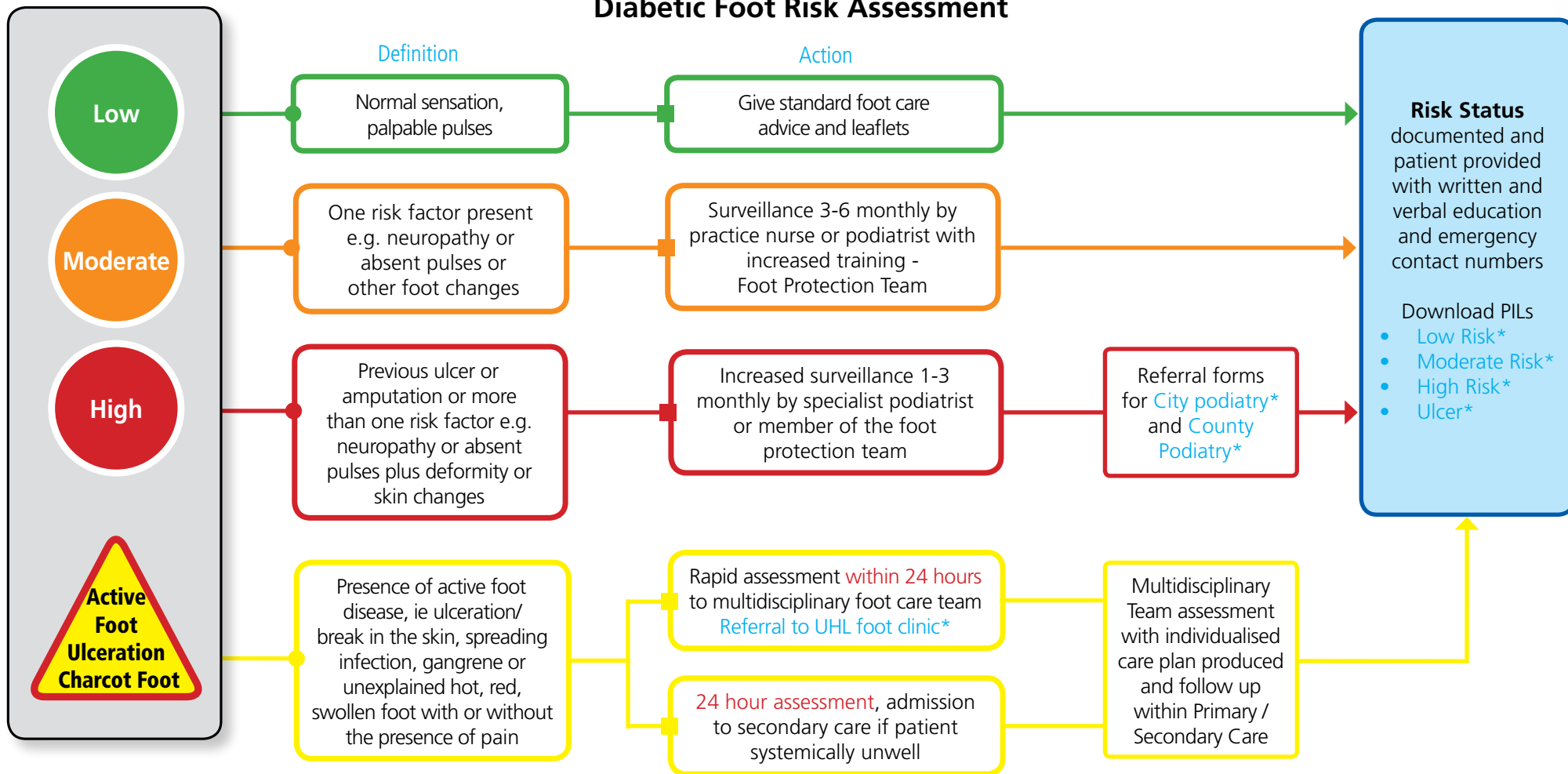
^unexplained hot, red, swollen foot with or without the presence of pain

*click on the blue links to download the referral forms and PILs or access via the Leicestershirediabetes website: www.leicestershirediabetes.org.uk

Annual Foot Review
Assumed patient part of ongoing care and one to one education as per NICE/NSF

- Foot Examination with shoes and socks stockings removed**
- Test foot sensations
 - Palpate foot pulses
 - Inspect for any deformity
 - Inspect for significant callus
 - Inspect footwear
 - Ask about any pain
 - Check for signs of ulceration
 - Ask about previous ulceration

Diabetic Foot Risk Assessment



*click on the blue links to download the referral forms and PILS or access via the Leicestershirediabetes website: www.leicestershirediabetes.org.uk